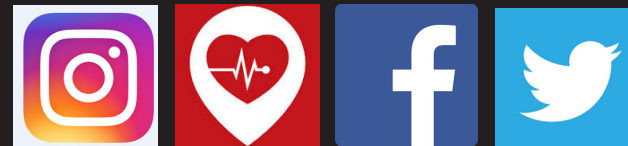




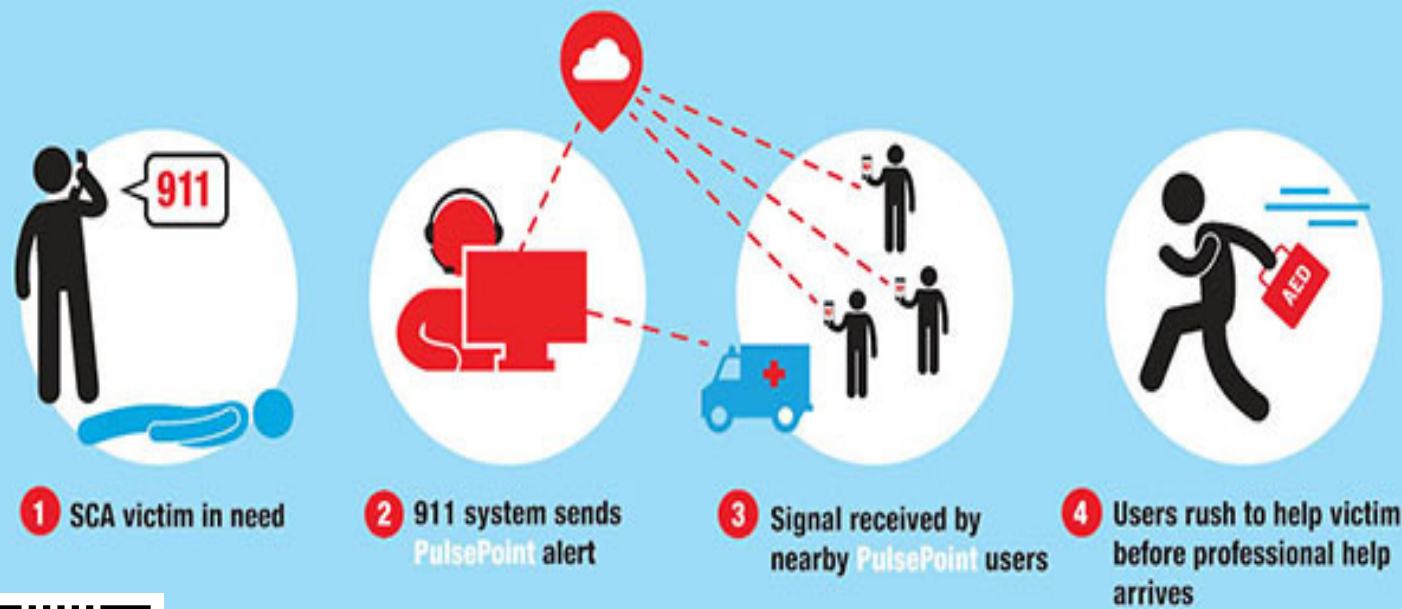
Fire District 3
8383 Agate Road
White City, OR 97503
Business Office:
(541) 826-7100

Residential
Burn Permit
Inside

Please subscribe to
Pulsepoint, and follow us
on Facebook, Instagram and Twitter.



LEARN CPR - GET THE APP - SAVE A LIFE



PulsePoint

Fire District 3 Spring Newsletter 2020



FIRE CHIEF'S MESSAGE

Greetings FD3 Patrons,

It continues to be my pleasure to serve as your Fire Chief and it is our privilege to be your fire district! At Fire District 3, our mission extends beyond protecting life and property, and includes preserving your quality of life through the services we provide. With that, we are excited to share some of the projects and programs we have been working on to continue improving our patron's quality of life.

We are undoubtedly at risk for the devastating impacts that wildfire can have on our community. Many of our community risk reduction initiatives are aimed at this threat. We are proud to support the Rogue Valley Integrated Community Wildfire Protection Plan that provides a roadmap for reducing our risk in the Rogue Valley. Additionally, we are proud to offer our fuels reduction trailer to patrons who have participated in our free home assessment program and need a mechanism to remove approved fuels from their property.

We are excited to have new faces in our organization including our four new recruit firefighters who are in the joint fire academy with Medford Fire/Rescue. We are proud of the partnership with the City of Medford. This partnership is a win/win for both communities; as they train together to improve skills, tactics and share costs associated with hosting a recruit fire academy.

We recognize the burn permit process in our community is complex and, dare I say, confusing. We have revised our burn permit in an effort to clarify the process, as well as have included a Spanish version. We appreciate your commitment to following the process to reduce fuels, protect the area from the spread of fire, and to preserve the quality of the environment.

We hope you have found the opportunity to drive past your fire station being constructed along Scenic Avenue near Scenic Middle School. This project is a great example of a community partnership to maximize the public good, with over four government agencies partnering to bring your fire station to life. This will be the permanent location for our crew who has been temporarily located on Table Rock Road.



District Vision
To reduce and eliminate risk from fire, rescue and medical events in the communities we serve.

District Mission
To preserve quality of life and protect property through public education, prevention activities and emergency response services.

Board of Directors
Harvey Tonn
Cindy Hauser
Bill Leavens
Stephen Shafer
John Dimick

Executive Team
Robert Horton
Stacy Maxwell
Mike Hussey
John Patterson
Dave Blakely
Justin Bates

Serving the communities of
Agate Lake
Central Point
Dodge Bridge
Gold Hill
Eagle Point
Sams Valley
White City

Contact Us
8383 Agate Road
White City, OR 97503
541-826-7100
www.jcfd3.com

continued on page 2

FIRE CHIEF'S MESSAGE CONTINUED

We are proud to report that this project has been funded within our general budget and will result in no additional taxes. It is worth celebrating the organization and community for making the commitment to achieve that goal.

Again, we are grateful that you are part of our Fire District 3 family! We aim to add value to this District through the services we provide and we welcome and encourage your engagement with us. Stay up to date with District happenings, updates and projects by following us on Facebook and Instagram. We believe that "Together We're Better" and we each can contribute to our collective mission of preserving the quality of life in this community.

Respectfully,

Bob

Robert B. Horton
Fire Chief

COMMUNITY STATS

945 Smoke Alarms Installed

444 Students Trained in
Hands-Only CPR

1 Firewise USA Sites Created

5,992 Pulsepoint Subscribers

NEW FIRE STATION RESULTS IN PARTNERSHIP

Fire District 3 is eager to conduct the grand opening for its Scenic Road Fire Station early this summer. The station is the result of a 3 year analysis of alarm activity, response times and availability of resources. The staff & fire engines housed at the location will provide quicker service to rural Central Point and the Gold Hill communities.

Early in concept, the District recognized an opportunity to enhance the livability and traffic flow in the area and sought out partnerships with the adjoining landowners; School District 6 and Jackson County Housing Authority. Two priorities emerged: maintain the open space to the West and improve the safety for parents and student's accessing the Middle School.

"The Central Point School District values our partnership with Fire District 3. Our students, staff and district community have benefited from FD3 internships, trainings and events; the location of the new station adjacent to Scenic Middle School will offer even more opportunities for our students and staff," said Samantha Steele, Superintendent of Central Point School District 6.

Enthusiasm and creativity from all entities led to an agreement to adjust lot lines and accommodate a new road into the Scenic Middle School. The Rock Way extension will allow School District 6 versatility to redesign the commute experience. As designs were being communicated, the City of Central Point joined the collaboration and expedited the effort to improve the North side of Scenic Avenue, allowing for more sidewalks and the addition of turn lanes. When students return to school in the fall of 2020, they will be the first to experience the new design.

As for the "park", the School District and Fire District will continue to maintain the area as open space for the public. The enthusiasm this project began with remains and may result in an improved park setting in the future. We would love to hear your ideas for the future and encourage you to share them with the Fire District and School District.



WILDLAND FUELS REDUCTION TRAILER

Fire District 3 wants to help you keep your property safe from fire. Having a defensible space around your home that is free of flammable vegetation is one of the best things a homeowner can do to protect their home from a wildfire.

To help residents create a defensible space around their home, the Fire District has a trailer available for residents to assist in hauling off their flammable vegetation. After a free wildland home assessment is completed, residents can request the trailer be delivered to their property. Once loaded by the resident, the trailer will be hauled off and emptied for free.

This program was implented and the trailer was first used in September of 2019. To date, 14 District patrons are scheduled to have the space around their home assessed and the trailer dropped off. Approximately 6 loads have been taken to Rogue Disposal and 12 loads taken to Biomass One.

Please call us to schedule your free wildland home assessment and to schedule the wildland fuels reduction trailer for your property!



FIRE DISTRICT 3

RECREATIONAL FIRE & RESIDENTIAL BURNING INFORMATION AND PERMIT

You are responsible for reading and understanding this information.



Oregon Department of Forestry (ODF) dually protects many portions of our outlying wildfire hazard areas. During fire season if your property is on dually assessed land you must abide by FD3 and ODF regulations. ODF contact information is listed below.

Department of Environmental Quality (DEQ) maintains an Air Quality Maintenance Area (AQMA) that encompasses many portions of our fire district. Residential burning inside the AQMA must abide by FD3, ODF and DEQ regulations.

Per Oregon Fire Code Section 307.3 fire officials are authorized to order the extinguishment of *any* fire that, in their judgement, creates or adds to a hazardous situation.

RESIDENTIAL BURNING consists of burn piles with leaves, brush and/or yard trimmings. Dimensions of the piles are limited to maximum of three feet (3') diameter and two feet (2') in height and must be 25' from other piles, hazards and any structures. **RESIDENTIAL BURNING IS EXPRESSLY DISALLOWED DURING FIRE SEASON.** Fire Season is declared by the Oregon State Forester when the potential of fire spread is determined to be a hazard.

DEQ\AQMA- Residential burning inside the AQMA is only allowed from March 1st to the beginning of fire season and again from the end of fire season to October 31st. During that time burning is only allowed when the ventilation index is above 400. Call 541-776-7007 to determine if it is a burn day. No burning is allowed in the AQMA from November 1st – February 28th. **RESIDENTIAL BURNING IS EXPRESSLY DISALLOWED DURING FIRE SEASON.**

Outside of the DEQ\AQMA residential burning is allowed only on designated burn days when the Ventilation Index is above 400. Call 541-776-7007 to determine if it is a burn day. **RESIDENTIAL BURNING IS EXPRESSLY DISALLOWED DURING FIRE SEASON.**

A CAMPFIRE/COOKING/RECREATIONAL FIRE is an outdoor fire in a protected pit, barbecue pit, fabricated fire pit or chimineas. Allowed burning materials include charcoal and firewood. Dimensions of the fire are limited to maximum of three feet (3') in diameter and two feet (2') in height and **MUST** be 15' from hazards and structures. Fires **MUST** be attended by a responsible adult at all times while burning. Recreational fires are not allowed on ODF protected lands during times of moderate, high, and extreme fire danger in accordance with ODF declarations.

Contact Information

Ventilation Index & Fire Season Information - 541-776-7007

*Oregon Department of Forestry Medford Office
541-664-3328 or visit www.swofire.com*

DEQ Air Quality Maintenance Area Information - 541-774-8207

Fire District 3- 541-826-7100 or visit www.jcfd3.com

You must ensure:

- ✓ Fires and burning must be under constant supervision of a responsible person with ability to extinguish the fire and immediate access to a phone to call for help.
- ✓ Fires and burning must be extinguished when conditions develop that could cause unwanted fire spread.
- ✓ Water, shovel, and rake are readily available for use..

LIABILITY: This informational permit does not relieve any person from criminal or civil liability for damages arising from fires or burning. Violations of FD3, ODF or DEQ regulations may result in the issuance of a citation, civil penalty and/or suppression cost recovery.

FIRE DISTRITO 3



Fuego recreativo y una quema INFORMACIÓN Y PERMISO

Usted es responsable de leer y entender esta información.

Oregon Departamento de Ciencias Forestales (ODF) protege doblemente muchas partes de nuestras áreas de peligro de incendios forestales periféricas. Durante la temporada de incendios si su propiedad está en tierra evaluado dualmente se debe cumplir con las regulaciones y FD3 ODF. ODF información de contacto aparece a continuación.

Departamento de Calidad Ambiental (DEQ) mantiene una calidad Área de Mantenimiento Aire (AQMA) que abarca muchas partes de nuestro distrito fuego. una quema en el interior del AQMA debe cumplir con las regulaciones FD3, ODF y DEQ.

Por Oregon Fuego Sección 307.3 Código los bomberos están autorizados a ordenar la extinción de cualquier incendio que, a su juicio, crea o se suma a una situación peligrosa.

Una quema consiste en montones de quemaduras con hojas, cepillo y / o restos de poda. Las dimensiones de las pilas se limitan a un máximo de tres pies (3 ') de diámetro y dos pies (2') de altura y debe ser de 25' de otras pilas, los peligros y cualquier estructura.Una quema EXPRESAMENTE DISALLOWED durante la temporada de FUEGO. Temporada de incendios es declarado por el Estado de Oregon Forester cuando el potencial de propagación del fuego se determina que es un peligro.

DEQ \ AQMA- Residencial quema en el interior del AQMA sólo se permite desde el 1 de marzo hasta principios de la temporada de incendios y otra vez desde el final de la temporada de incendios al 31 de octubre. Durante ese tiempo de combustión sólo se permite cuando el índice de ventilación está por encima de 400. Llame 541-776-7007 para determinar si se trata de un día de grabación. No se quema está permitido en el AQMA del 1 de noviembre - 28 de febrero. Una quema EXPRESAMENTE DISALLOWED durante la temporada de FUEGO.

Fuera de la quema residencial DEQ \ AQMA se permite sólo en los días designados por quemaduras cuando el índice de ventilación está por encima de 400. Llame 541-776-7007 para determinar si se trata de un día de grabación. Una quema EXPRESAMENTE DISALLOWED durante la temporada de FUEGO.

A / fuego recreativo fogata / cocina es un fuego al aire libre en un pozo protegido, pozo de barbacoa, pozo de fuego fabricada o chimineas. materiales de grabación de compañía incluyen carbón y leña. Dimensiones del fuego se limitan a un máximo de tres pies (3 ') de diámetro y dos pies (2') de altura y deben ser 15' de los peligros y estructuras. Los incendios deben ser atendidos por un adulto responsable en todo momento durante la grabación. fuegos recreativos no están permitidos en ODF protegida tierras en tiempos de moderado, alto, y el peligro extremo de incendio, de acuerdo con las declaraciones de ODF.

Información del contacto

Índice de ventilación y de incendios información Season - 541-776-7007

Departamento de Ciencias Forestales Oficina Medford Oregon
541-664-3328 o visita www.swofire.com

DEQ Calidad del aire Mantenimiento Los alrededores - 541-774-8207

Bomberos del Distrito 3- 541-826-7100 o visita www.jcfd3.com

RESPONSABILIDAD: Este permiso de información no exime a cualquier persona de la responsabilidad penal o civil por los daños derivados de un incendio o quema. Violaciones de FD3, ODF o reglamentos DEQ pueden dar lugar a la emisión de una citación, sanción civil y / o recuperación de los

Orgullo servir a las comunidades de Central Point, Eagle Point, Gold Hill, White City, ágata del lago, puente de Dodge y Sams Valley

WILDLAND HOME ASSESSMENTS IN GOLD HILL

You may have seen Fire District 3 personnel working in the Gold Hill area over the last several months. With the help of Fire District 3 volunteers and a Southern Oregon University Intern, we have been busy assessing the Gold Hill area for its vulnerability risk to a wildfire.

Personnel work through an area evaluating each home on many different factors that affect its ability to survive a wildfire. This information is mapped into a computer system that is available for emergency responders to see during an emergency. The information is also used to focus community risk reduction efforts on the most vulnerable areas of a community and help us plan for the future.

We offer free personalized wildland home risk assessments, if interested please call our office at (541) 826-7100.



Call Fire District 3
today for a free
home assessment
541-826-7100

HOW TO PREPARE YOUR HOME FOR WILDFIRES

HOW TO PREPARE YOUR HOME FOR WILDFIRES

WILDFIRE RISK REDUCTION STEPS THAT CAN MAKE YOUR HOME SAFER DURING A WILDFIRE



VEGETATION MANAGEMENT

1. HOME IGNITION ZONES

Limiting the amount of flammable vegetation, choosing fire-resistant building materials and construction techniques, along with periodic exterior maintenance in the three home ignition zones - increases the chances your home will survive a wildfire when exposed to embers and/or a surface fire. The zones include the **Immediate Zone**: 0 to 5 feet around the house; **Intermediate Zone**: 5 to 30 feet; and the **Extended Zone**: 30 to 100 feet.

2. LANDSCAPING AND MAINTENANCE

To reduce ember ignitions and fire spread, trim branches that overhang the home, porch and deck and prune branches of large trees up to (depending on their height) 8 to 10 feet from the ground. Remove plants containing resins, oils and waxes and ensure mulches in the **Immediate Zone** (0 to 5 feet around the house) are non-combustible options like crushed stone and gravel. Maintain vegetation annually.

FIRE RESISTIVE CONSTRUCTION

3. ROOFING AND VENTS

Class A fire-rated roofing products offer the best protection. Examples include: Composite shingles, metal, concrete and clay tiles. Inspect shingles or roof tiles and replace or repair those that are loose or missing to prevent ember penetration. Box-in eaves, but provide ventilation to prevent condensation and mildew. Roof and attic vents should be screened to prevent ember entry.

4. DECKS AND PORCHES

Never store flammable materials underneath decks or porches. Remove dead vegetation and debris from under decks/porches and between deck board joints.

5. SIDING AND WINDOWS

Embers can collect in small nooks and crannies and ignite combustible materials; radiant heat from flames can crack windows. Use fire-resistant siding such as brick, fiber-cement, plaster or stucco and dual-pane tempered glass windows.

6. EMERGENCY RESPONDER ACCESS

Ensure your home and neighborhood has legible and clearly marked street names and numbers. Driveways should be at least 12 feet wide with a vertical clearance of 15 feet, for emergency vehicle access.

BE PREPARED

Develop, discuss and practice an emergency action plan with everyone in your home. Include details for pets, large animals and livestock. Know two ways out of your neighborhood and have a pre-designated meeting place. Always evacuate if you feel it's unsafe to stay - don't wait to receive an emergency notification if you feel threatened from the fire.

Conduct an annual insurance policy check-up to adjust for local building costs, codes and new renovations. Create/update a home inventory to help settle claims faster.



OTHER CONSIDERATIONS

- Store firewood away from the home
- Mow the lawn regularly
- Prune low-hanging tree branches
- Landscape with fire-resistant plants
- Create small fuel breaks with hardscaping features

TALK TO YOUR LOCAL FORESTRY AGENCY OR FIRE DEPARTMENT TO LEARN MORE ABOUT THE SPECIFIC WILDFIRE RISK WHERE YOU LIVE.



FIREWISE USA™
RESIDENTS REDUCING WILDFIRE RISKS

VISIT FIREWISE.ORG FOR MORE DETAILS

Firewise® is a program of the National Fire Protection Association. This publication was produced in cooperation with the USDA Forest Service, US Department of the Interior and the National Association of State Foresters. NFPA is an equal opportunity provider. Firewise® and Firewise USA® are registered trademarks of the National Fire Protection Association, Quincy, MA 02269.

Order a Reducing Wildfire Risks in the Home Ignition Zone checklist/poster at [Firewise.org](https://www.firewise.org)

The Home Ignition Zone (HIZ): A Three Step Process

The home ignition zone was created in the late 1990's through experimental research showing how homes ignite due to radiant heat. What came of this was defining three specific zones around a home.

Immediate zone 0-5 feet from the furthest attached exterior point of the home:
The home and the area 0-5 feet from the furthest attached exterior point of the home; defined as a non-combustible area. Science tells us this is the most important zone to take immediate action on as it is the most vulnerable to embers. **START WITH THE HOUSE ITSELF** then move into the landscaping section of the Immediate Zone.

- Clean roofs and gutters of dead leaves, debris and pine needles that could catch embers.
- Replace or repair any loose or missing shingles or roof tiles to prevent ember penetration.
- Reduce embers that could pass through vents in the eaves by installing 1/8 inch metal mesh screening.
- Clean debris from exterior attic vents and install 1/8 inch metal mesh screening to reduce embers.
- Repair or replace damaged or loose window screens and any broken windows. Screen or box-in areas below patios and decks with wire mesh to prevent debris and combustible materials from accumulating.
- Move any flammable material away from wall exteriors - mulch, flammable plants, leaves and needles, firewood piles - anything that can burn. Remove anything stored underneath decks or porches.

Intermediate zone 5-30 feet from the furthest attached exterior point of the home:
5-30 feet from the furthest exterior point of the home. Landscaping/hardscaping- employing careful landscaping or creating breaks that can help influence and decrease fire behavior.

- Clear vegetation from under large stationary propane tanks.
- Create fuel breaks with driveways, walkways/paths, patios, and decks.
- Keep lawns and native grasses mowed to a height of 4 inches.
- Remove ladder fuels (vegetation under trees) so a surface fire cannot reach the crowns. Prune trees up to 6-10 feet from the ground; for shorter trees do not exceed 1/3 of the overall tree height.
- Space trees to have a minimum of 18 feet between crowns with the distance increasing with the percentage of slope.
- Tree placement should be planned to ensure the mature canopy is no closer than 10 feet to the edge of the structure.
- Tree and shrubs in this zone should be limited to small clusters of a few each to break up the continuity of the vegetation across the landscape.

Extended zone 30-100 feet from the furthest attached exterior point of the home:
30-100 feet, out to 200 feet. Landscaping/hardscaping- the goal here is not to eliminate fire but to interrupt fire's path and keep flames smaller and on the ground.

- Dispose of heavy accumulations of ground litter/debris.
- Remove dead plant and tree material.
- Remove small conifers growing between mature trees.
- Remove vegetation adjacent to storage sheds or other outbuildings within this area.
- Trees 30 to 60 feet from the home should have at least 12 feet between canopy tops.*
- Trees 60 to 100 feet from the home should have at least 6 feet between the canopy tops.*

* The distances listed for crown spacing are suggested based on NFPA 1144. However, the crown spacing needed to reduce/prevent crown fire potential could be significantly greater due to slope, the species of trees involved and other site specific conditions. Check with your local forestry professional to get advice on what is appropriate for your property.

RECRUIT ACADEMY 20-01

Fire District 3 is pleased to announce the hiring of four new firefighters who will begin a recruit academy on February 3, 2020. The new recruits replace two vacant firefighter positions, one upcoming retirement, and one anticipated promotion.

Service delivery to our patrons is a critical component of our Mission. Our recruit academy prepares personnel for the variety of calls for service we receive from those who live and travel throughout our fire district. These calls for service range from medical-related events, vehicle collisions, rescue events, and building fires. Due to the vast nature and complexity of our industry, our recruits undergo extensive training during their one year of probation, beginning with a recruit academy.

Throughout the 11-week recruit academy, the recruits participate in various firefighting skills such as hose deployment, search and rescue, ladder carries and placement, smoke removal from a residence, forcible entry techniques, and driving of fire apparatus. Additionally, the recruits will learn about life-saving medical techniques and procedures, removing trapped patients from vehicles, and basic rope rescue techniques.

Our goal throughout the academy is to prepare the recruits to be a high-functioning member of their assigned engine company upon graduation. With approximately 440 hours of focused training, we are confident in their ability to provide quality service to our patrons when requested.

Throughout the remainder of their probationary year the recruits continue focused training with their assigned crew. The topics are structured to build on what they learned in the academy, helping them understand more of a global perspective of the fire district. This includes familiarization of district geography, policy and procedures, and use of specialized tools and equipment. After numerous written exams and skill evaluations throughout the year, the recruits earn certifications from the Oregon Department of Public Safety Standards and Training (DPSST). These certifications verify a fire service professional's knowledge, skills, and abilities established by National standards and are required by the fire district as minimum standards for our personnel.

We welcome our newest members to the fire district family and we look forward to them serving our community for many years to come!



HELP US HELP YOU!

If you haven't signed up for Jackson County Citizen Alert, now is the time! During last year's wildfire season, it was apparent that many citizens were not receiving emergency alerts. Jackson County uses Citizen Alert to notify residents of important public safety information, such as wildfire evacuations, hazardous materials accidents or even a fugitive in your area.

Landline phone numbers (both published and non-published) are automatically provided to the emergency notification system by the phone company, however many people don't have a landline phone anymore. Cellular companies do not provide telephone numbers to the system. If you do not have a landline telephone at your home, we do not have your information and therefore, we cannot alert you about potentially dangerous situations. Signing up for Jackson County Citizen Alert enables you to receive timely notification wherever you are.

We suggest that all residents of Jackson County sign up to receive emergency messages from Citizen Alert. "Opting-In to Jackson County Citizen Alert will maximize your ability to receive emergency notifications and accurate up-to-date information in a timely manner for events that may affect your personal safety and property."

Jackson County doesn't share your information with anyone. Your information is only used to send you emergency information, and (if you choose) important community alerts.

To sign up for Citizen Alert, visit www.jacksoncounty.org/alert.

